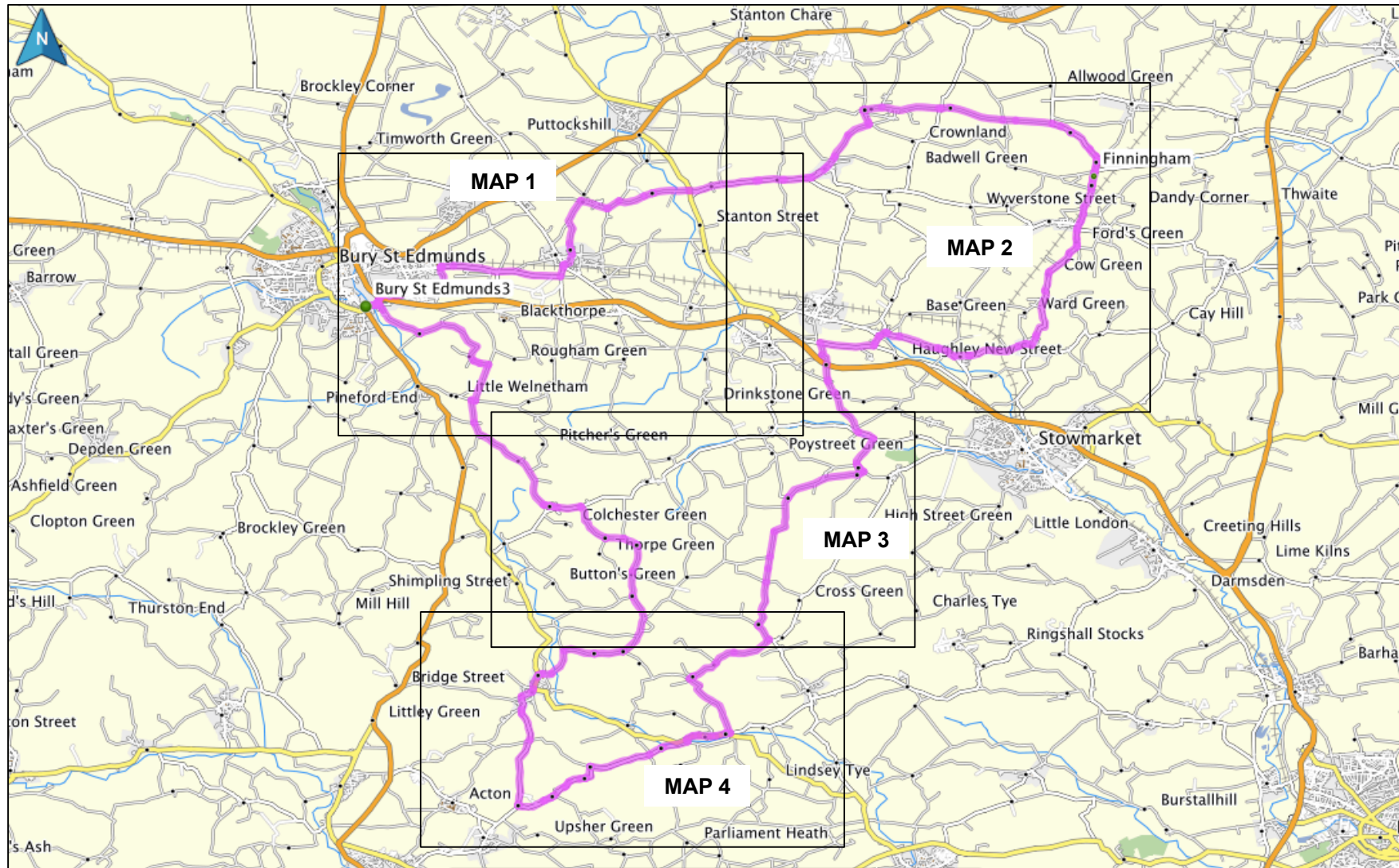


The complete route – 60 Miles



The complete route – 60 Miles

The start and finish of the route will be the BSE Rugby Club.
The route will go from the Club then on to

- Thurston 5 miles
- Walsham le Willows 12 miles
- Finningham 18 miles (Water Stop)
- Old Newton 22 miles
- Wetherden 25 miles
- Buxhall 30 miles (cafe stop available)
- Hitcham 35 miles
- Monks Eleigh 39 miles
- Little Waldingfield 43 miles (Water Stop)
- Lavenham 47 Miles (cafe stop available)
- Cockfield 53 miles
- Rushbrooke 58 miles
- BSERUFC 60 miles

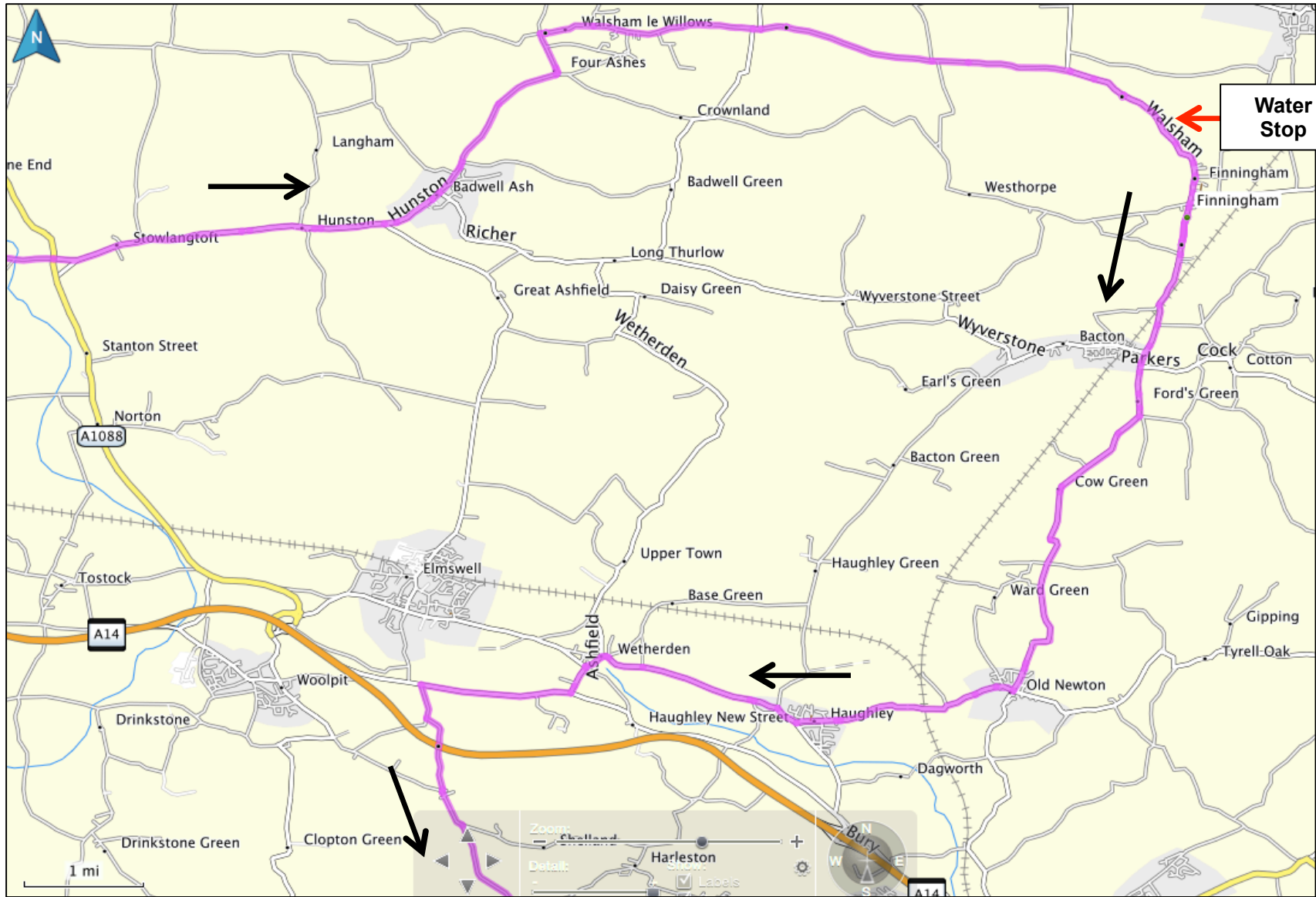
Notes

1. Please check-in at both WATER STOPS and at the START and FINISH
2. There is an optional CAFÉ STOP in Buxhall at around 30 miles, where you can buy wonderful cakes and hot drinks. This will not be manned by our volunteer support team
3. There are one or two pubs on the way round too

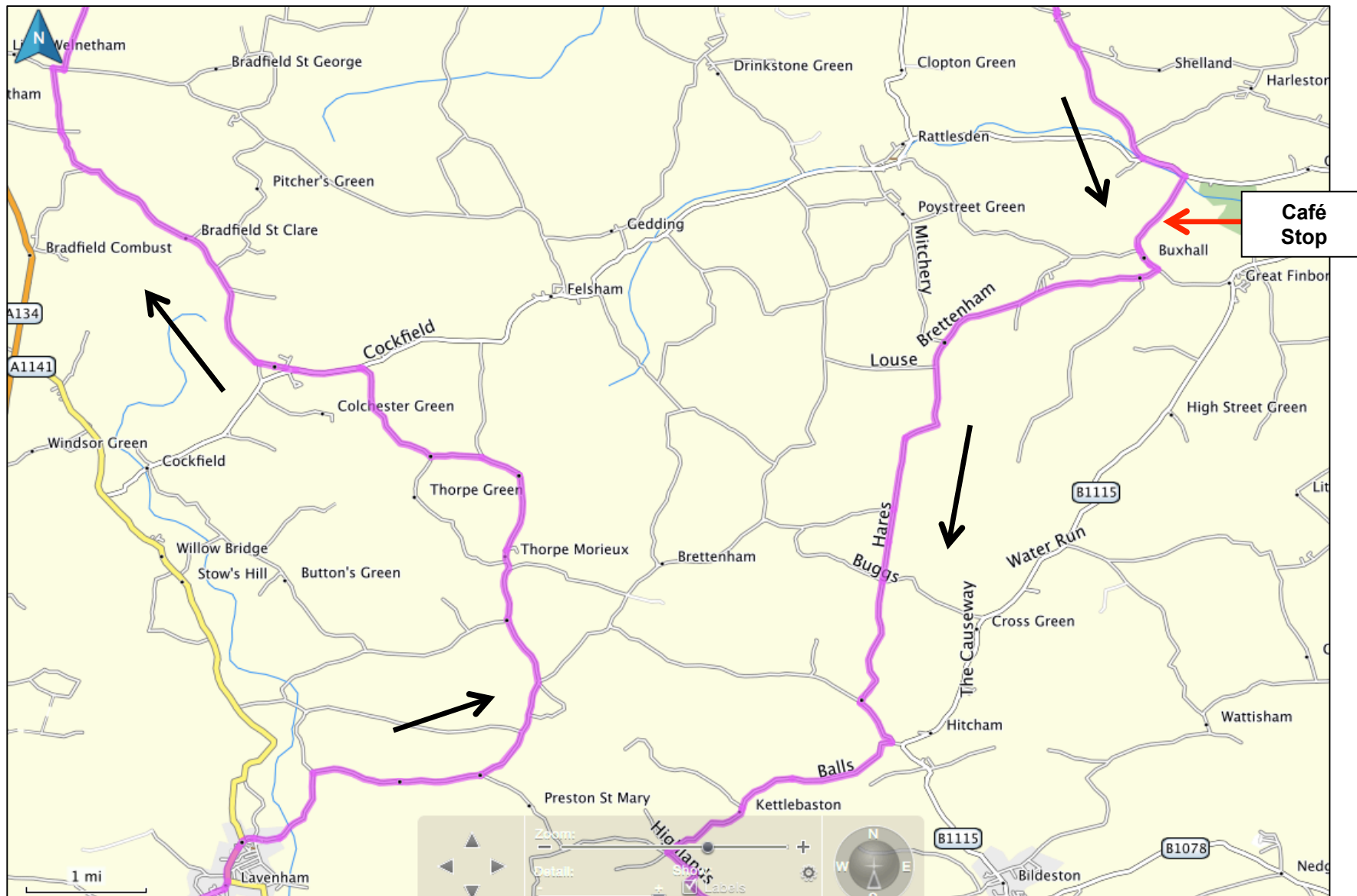
MAP 1



MAP 2



MAP 3



MAP 4

